

Fat flush pull handle, round - steel

Tom Dixon collection

Product

Ø70mm, satin finish

Tender text

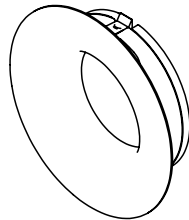
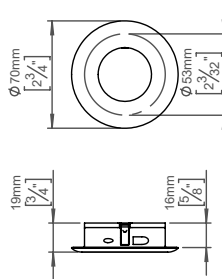
FAT flush pull handle, round, Ø70mm, satin finish. The FAT collection is a series of architectural hardware pieces designed by English industrial designer Tom Dixon. Manufactured in the highest quality marine grade, AISI 316 stainless steel, protecting against high levels of corrosion. Diameter: Ø70mm. W: 70mmxH: 70mmxD: 19mm. 20-year warranty.

Product specification

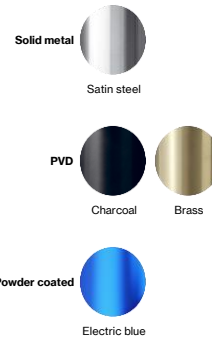
Dimensions: 70x70x19mm.

Diameter: Ø70mm

Material: stainless steel AISI 316

[20-year warranty \(5 years for coated items\)](#)

Available finishes

Spare parts/
accessories

14970102016 - Grub screw, M5x6.8mm

14970102019 - Grub screw, M5x8.3mm

Mounting

<https://dline.com/mounting-instructions/>

25 pcs. in a bag

Product care

d line products are produced in the highest quality marine grade AISI 316 stainless steel. To sustain the unique d line finish please follow the below instructions:

- Wash down the surfaces using soapy water or mild detergent
- Always thoroughly rinse off with clean water

- To complete the cleaning procedure dry/polish the surface with a soft dry cloth

Please do not use scouring powder, steel wool, chloride based detergents or other aggressive cleaning products as these may damage the surface.

If spots or corrosion appear on the surface it is not due to the stainless steel quality, but to impurities in the environment, aggressive conditions or improper or insufficient cleaning.