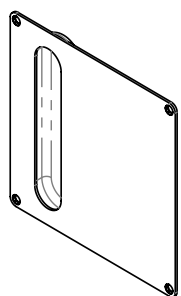
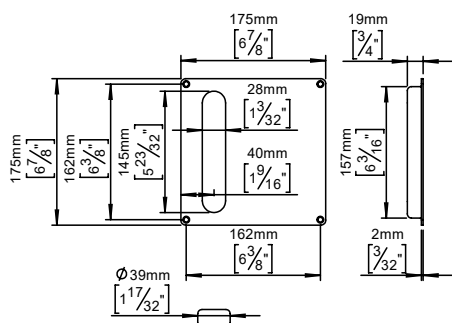


Flush pull square










Knud Holscher
collection

Product	On back plate, 175x175mm.
Tender text	Knud Holscher collection, flush pull handle, square, on back plate, 175x175mm. Manufactured in the highest quality marine grade, AISI 316 stainless steel, protecting against high levels of corrosion. Certified in accordance with EN 1906 to ---B----. 20-year warranty.
Product specification	Dimensions: 175x175x17mm Material: stainless steel AISI 316 Surface finish: satin grain 320, crafted by hand 20-year warranty (5 years for coated items)

Available finishes

Finishes

Solid metal				
	Satin steel	Polished steel		
PVD				
	Black	Copper	Brass	Bronze
Powder coated				
	Black			

**Spare parts/
accessories**

Mounting

<https://dline.com/mounting-instructions/>

Product care

d line products are produced in the highest quality marine grade AISI 316 stainless steel. To sustain the unique d line finish please follow the below instructions:

- unique d line finish please follow the below instructions:
- Wash down the surfaces using soapy water or mild detergent
 - Always thoroughly rinse off with clean water
 - To complete the cleaning procedure dry/polish the surface with a soft dry cloth
- Please do not use scouring powder, steel wool, chloride based detergents or other aggressive cleaning products as these may damage the surface.

If spots or corrosion appear on the surface it is not due to the stainless steel quality, but to impurities in the environment, aggressive conditions or improper or insufficient cleaning.