

Foldable grab rail f/ barrier-free

Knud Holscher collection

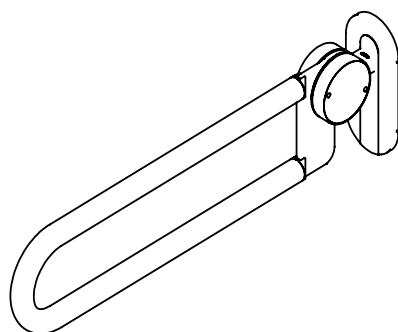
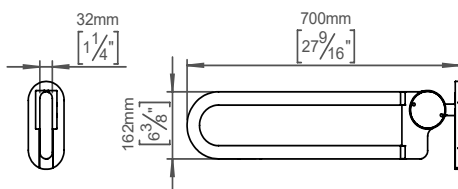
Product 700mm.

Tender text

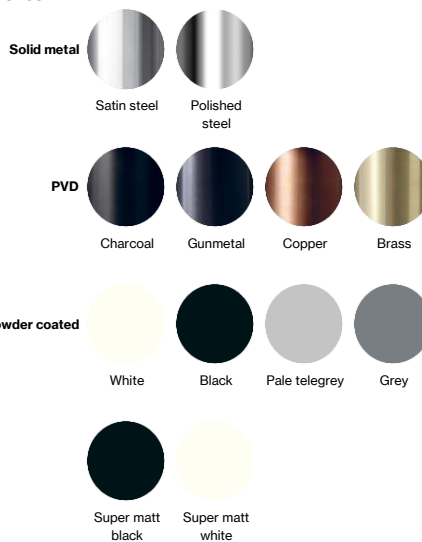
Knud Holscher collection, folding grab rail, barrier free, 700mm, self-tapping screws included. Manufactured in the highest quality marine grade, AISI 316 stainless steel, protecting against high levels of corrosion. Certified in accordance with EN 12182. 20-year warranty.

Product specification

Dimensions: 92x212x700mm
Material: stainless steel AISI 316
NOTE: Toilet roll holder not included
Surface finish: satin grain 320, crafted by hand
[20-year warranty \(5 years for coated items\)](#)



Available finishes



Spare parts/ accessories

14755602006 - Toilet Roll Holder f/Grab Bar, foldable with pin
14755602007 - Toilet Roll Holder f/Grab Bar, foldable without pin

Mounting

<https://dline.com/mounting-instructions/>

Product care

d line products are produced in the highest quality marine grade AISI 316 stainless steel. To sustain the unique d line finish please follow the below instructions:

- Wash down the surfaces using soapy water or mild detergent
 - Always thoroughly rinse off with clean water
 - To complete the cleaning procedure dry/polish the surface with a soft dry cloth
- Please do not use scouring powder, steel wool, chloride based detergents or other aggressive cleaning products as these may damage the surface.
- If spots or corrosion appear on the surface it is not due to the stainless steel quality, but to impurities in the environment, aggressive conditions or improper or insufficient cleaning.