

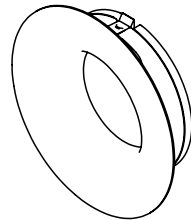
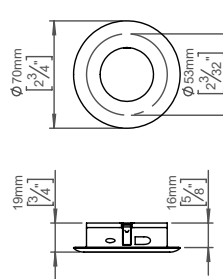
Fat flush pull handle, round - brass

Tom Dixon collection

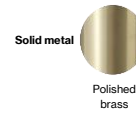
Product Ø70mm, brass

Tender text FAT flush pull handle, round, Ø70mm, polished. The FAT collection is a series of architectural hardware pieces designed by English industrial designer Tom Dixon. Material: brass. Diameter: Ø70mm. W: 70mmxH: 70mmxD: 19mm. 20-year warranty.

Product specification Dimensions: 70x70x19mm.
Diameter: Ø70mm
Material: polished brass
Surface finish: polished, crafted by hand
[20-year warranty \(5 years for coated items\)](#)



Available finishes



**Spare parts/
accessories** 14970102016 - Grub screw, M5x6.8mm
14970102019 - Grub screw, M5x8.3mm

Mounting <https://dline.com/mounting-instructions/>

25 pcs. in a bag

Product care

d line products are produced in the highest quality brass. To sustain the unique d line finish please follow the below instructions:

- Wash down the surfaces using soapy water or mild detergent
- Always thoroughly rinse off with clean water
- To complete the cleaning procedure dry/polish the surface with a soft dry cloth

Please do not use scouring powder, steel wool, chloride based detergents or other aggressive cleaning products as these may damage the surface.

If spots or corrosion appear on the surface it is not due to the stainless steel quality, but to impurities in the environment, aggressive conditions or improper or insufficient cleaning.