

# Fat pull handle, small - steel

## Tom Dixon collection

Product

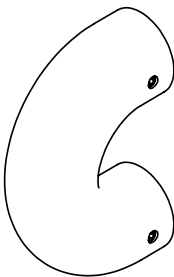
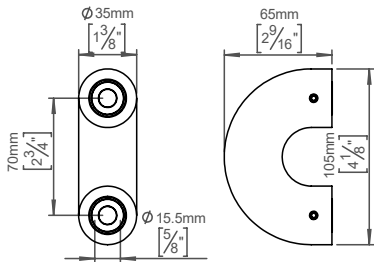
Bush, Ø35mm, cc 70mm, satin

Tender text

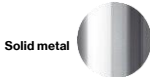
FAT pull handle, small. Bush, Ø35mm, cc 70mm, satin finish. The FAT collection is a series of architectural hardware pieces designed by English industrial designer Tom Dixon. Manufactured in the highest quality marine grade, AISI 316 stainless steel, protecting against high levels of corrosion. W: 105mmxH: 65mmxD: Ø35mm. 20-year warranty.

Product specification

Dimensions: 105x65mm. Diameter: Ø35mm. Material: stainless steel AISI 316 Surface finish: satin grain 320, crafted by hand [20-year warranty \(5 years for coated items\)](#)



Available finishes



Solid metal

Satin steel



PVD

Black

Brass



Powder coated

Electric blue

Spare parts/ accessories

- 14491792303 - Bush head bolt M10x30mm
- 14491792605 - Bush head bolt M10x60mm
- 14970100077 - Grub screw M5x10mm, DIN 916
- 14976500106 - Allen key 2.5mm
- 14974102251 - Thrust rose Ø26.4x2mm
- 12496500304 - Fitting f/glass door Ø10mm

Mounting

<https://dline.com/mounting-instructions/>

8 pcs. per box

Product care

d line products are produced in the highest quality marine grade AISI 316 stainless steel. To sustain the unique d line finish please follow the below instructions:

- Wash down the surfaces using soapy water or mild detergent
- Always thoroughly rinse off with clean water
- To complete the cleaning procedure dry/polish the surface with a soft dry cloth

Please do not use scouring powder, steel wool, chloride based detergents or other aggressive cleaning products as these may damage the surface.

If spots or corrosion appear on the surface it is not due to the stainless steel quality, but to impurities in the environment, aggressive conditions or improper or insufficient cleaning.