

Foldable seat f/ barrier-free

Knud Holscher collection

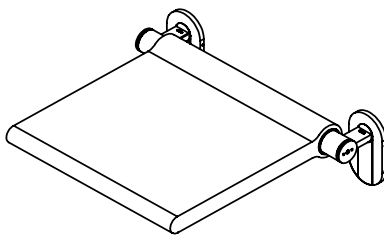
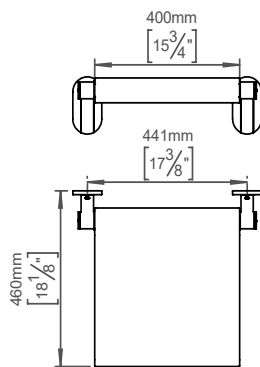
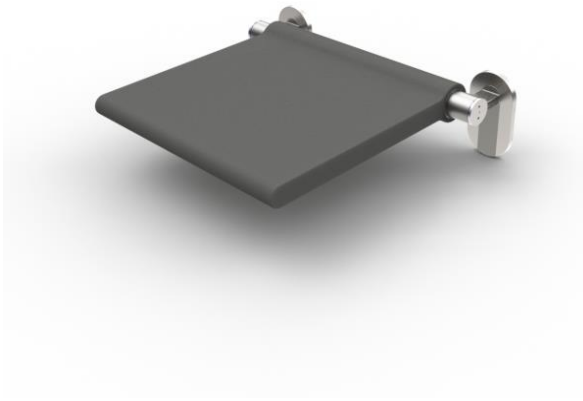
Product PU foam, H: 150mm, W: 521mm, D: 460mm.

Tender text

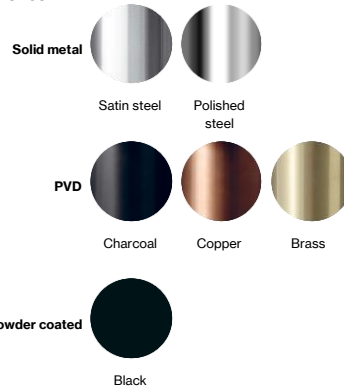
Knud Holscher collection, foldable seat, barrier-free, PU coated, self-tapping screws included. Manufactured in the highest quality marine grade, AISI 316 stainless steel, protecting against high levels of corrosion. Certified in accordance with EN 12182. 20-year warranty.

Product specification

Dimension: 521x150x460mm
 Material: stainless steel AISI 316
 Surface finish: satin grain 320, crafted by hand
[20-year warranty \(5 years for coated items\)](#)
 Recommended MAX user weight according to wall type (for included anchors):
 Concrete >= C20/25 - 150 kg
 Solid brick >= Mz 12 - 150 kg
 Solid sand lime stone >= KS 12 - 150 kg
 Aerated concrete >= PB2, PP2 (G2)
 - Not recommended
 Aerated concrete >= PB4, PP4 (G4) - 120 kg
 Vertically perforated bricks >= Hlz 12
 ($\rho \geq 1 \text{ kg/dm}^3$) - 100 kg
 Perforated sand-lime brick - 120 kg



Available finishes



Spare parts/ accessories

Mounting

<https://dline.com/mounting-instructions/>

Product care

d line products are produced in the highest quality marine grade AISI 316 stainless steel. To sustain the unique d line finish please follow the below instructions:

- Wash down the surfaces using soapy water or mild detergent
- Always thoroughly rinse off with clean water
- To complete the cleaning procedure dry/polish the surface with a soft dry cloth

Please do not use scouring powder, steel wool, chloride based detergents or other aggressive cleaning products as these may damage the surface.

If spots or corrosion appear on the surface it is not due to the stainless steel quality, but to impurities in the environment, aggressive conditions or improper or insufficient cleaning.