

# Fat escutcheon w/ key hole - steel

## Tom Dixon collection

## Product

Ø70x17mm, cc 38/27mm, satin

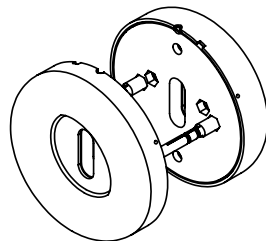
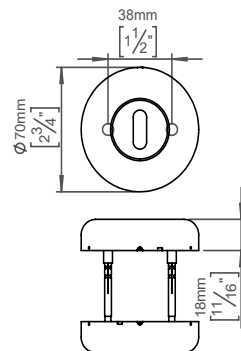


## Tender text

FAT escutcheon w/key hole, Ø70x17mm, cc 38/27mm, satin finish. The FAT collection is a series of architectural hardware pieces designed by English industrial designer Tom Dixon. Manufactured in the highest quality marine grade, AISI 316 stainless steel, protecting against high levels of corrosion. W: 70mmxH: 70mmxD: 17.5mm. 20-year warranty.

## Product specification

Dimensions: 70x70x17,5mm.  
Material: stainless steel AISI 316  
Surface finish: satin grain 320, crafted by hand  
[20-year warranty \(5 years for coated items\)](#)



## Available finishes

Solid metal



Satin steel

PVD



Charcoal



Brass

Powder coated



Electric blue

## Spare parts/ accessories

P 80 - Sectioned bolt M4x10mm with bush

## Mounting

<https://dline.com/mounting-instructions/>

17 sets per box

## Product care

d line products are produced in the highest quality marine grade AISI 316 stainless steel. To sustain the unique d line finish please follow the below instructions:

- Wash down the surfaces using soapy water or mild detergent
  - Always thoroughly rinse off with clean water
  - To complete the cleaning procedure dry/polish the surface with a soft dry cloth
- Please do not use scouring powder, steel wool, chloride based detergents or other aggressive cleaning products as these may damage the surface.
- If spots or corrosion appear on the surface it is not due to the stainless steel quality, but to impurities in the environment, aggressive conditions or improper or insufficient cleaning.