

Fat flush pull handle, round - steel

Tom Dixon collection

Product Ø70mm, satin finish



Tender text

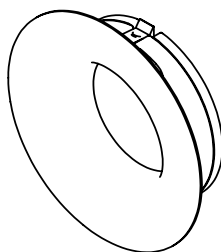
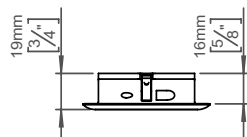
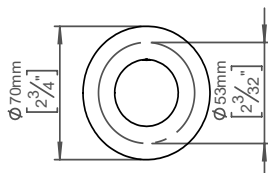
FAT flush pull handle, round, Ø70mm, satin finish. The FAT collection is a series of architectural hardware pieces designed by English industrial designer Tom Dixon. Manufactured in the highest quality marine grade, AISI 316 stainless steel, protecting against high levels of corrosion. Diameter: Ø70mm. W: 70mmxH: 70mmxD: 19mm. 20-year warranty.

Product specification Dimensions: 70x70x19mm.

Diameter: Ø70mm

Material: stainless steel AISI 316

[20-year warranty \(5 years for coated items\)](#)



Available finishes

Solid metal



Satin steel

PVD



Charcoal

Powder coated



Electric blue

**Spare parts/
accessories**

14970102016 - Grub screw, M5x6.8mm

14970102019 - Grub screw, M5x8.3mm

Mounting

<https://dline.com/mounting-instructions/>

25 pcs. in a bag

Product care

d line products are produced in the highest quality marine grade AISI 316 stainless steel. To sustain the unique d line finish please follow the below instructions:

- Wash down the surfaces using soapy water or mild detergent
 - Always thoroughly rinse off with clean water
 - To complete the cleaning procedure dry/polish the surface with a soft dry cloth
- Please do not use scouring powder, steel wool, chloride based detergents or other aggressive cleaning products as these may damage the surface.
- If spots or corrosion appear on the surface it is not due to the stainless steel quality, but to impurities in the environment, aggressive conditions or improper or insufficient cleaning.