

# Built-in sensor tap, 190mm

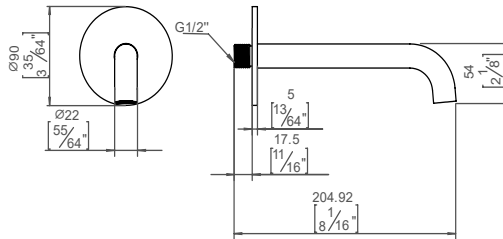
## Qtoo collection

**Product** 190mm infrared sensor tap for wall installation

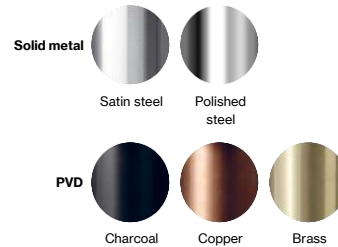
**Tender text** QTOO collection, sensor tap for wall. Manufactured in the highest quality marine grade, AISI 316 stainless steel, protecting against high levels of corrosion and securing cleaner drinking and utility water.



**Product specification** Projection: 190mm - 7 1/2"  
 Rose Ø90mm - 3 1/2" with integrated sensor  
 Built in aerator  
 Max. flow rate: 5L - 1,3gpm  
 Comfort time out 2 sec.  
 Security time out 30 sec.  
 Automatic rinse cycle (deactivated)  
 Always secure min. 140mm - 5 1/2" distance from aerator to washbasin waste  
 Use with Flexbox QSF01 and connector QS3400  
 Temperature control in Flexbox  
 Max. work pressure 8 bar  
 Including 920mm - 36 7/32" cable  
 Lead free compliant  
 Material: Marine grade AISI 316 stainless steel  
[20-year warranty \(5 years for coated items\)](#)



### Available finishes



**Spare parts/ accessories** QSF01 - Premix Flexbox  
 QS3400 - Built in spout connector

**Mounting** <https://dline.com/mounting-instructions/>

### Product care

d line products are produced in the highest quality marine grade AISI 316 stainless steel. To sustain the unique d line finish please follow the below instructions:

- Wash down the surfaces using soapy water or mild detergent
- Always thoroughly rinse off with clean water
- To complete the cleaning procedure dry/polish the surface with a soft dry cloth

Please do not use scouring powder, steel wool, chloride based detergents or other aggressive cleaning products as these may damage the surface.  
 If spots or corrosion appear on the surface it is not due to the stainless steel quality, but to impurities in the environment, aggressive conditions or improper or insufficient cleaning.